

Bridge 2011

4th Biennale Exhibition in Bangkok

POWER OF IMAGERY

What Japanese artists are painting after 3/11



SINCE 1990

14 Contemporary Artists from Japan

Keiko ASHIKAGA
Akinori ITO
Kana ITO
KATO, Shojiro
Hirotaka KASAHARA
Yuko KAWAGUCHI
YONAHARA, Taichi
KURIBAYASHI, Tsuneo
TERADA, Toshiyuki
NAO, Atsuhiko
Tomomi HIKATSU
Rei HAYASE
Kaoru YASUDA
Noriko YATA

1st to 20th August 2011 AKKO ART GALLERY
September to December 2011 KINOKUNIYA BOOK STORE
(Paragon & Isetan department store)

Bridge 2011 – Power of Imagery

What Japanese artists are painting after 3/11

BRIDGE is a biennale project since 2005 to introduce contemporary and affordable Japanese art to the Thai art scene. The Bridge series is increasingly enjoying high repute in terms of quality and content.

While preparing for the 4th Bridge Exhibition with hope and expectation, unprecedented events gave way on the 11th of March as Japan suffered great earthquakes, tsunamis, and nuclear accidents. Within these tough times in Japan, the three of us deliberated for a while as to whether to continue on with Bridge. Then we saw the resilience of the victims, as well as the help, encouragement, and volunteer efforts given to Japan from both Thailand and around the world. We too, were given words of encouragement from people within the Thai art world and decided to proceed with the individual artists to prepare for Bridge 2011.

Bridge participating artist Yuko Kawaguchi commented "I painted this hoping for ease of the sadness and worry in the disaster victims."



53.0 x 45.5 cm



80.3 x 60.6 cm



**KEIKO
ASHIKAGA**

Oil & Pencil
on Canvas

Ito, Akinori commented, "Even though the light from the sky has not changed, after 311 the shape of the shadow reflected on the earth is completely different. There's something there recollected from deep inside my memory." Taichi Yonaha comments, "I paint the sky that is reflected on the surface of the water. The opposing world exists at the same time. So I'm painting a world within this small world." While facing up to reality, the heart of each artist has been poured into creating artwork post 311.

Bridge 2011 itself is NOT a charity exhibition. Rather, it shows the productivity of the artists after 311 and the stamina and resilience of the Japanese.

We are all so thankful that we can hold this exhibition and are looking forward to meeting you at Bridge 2011.

Yukio Ogushi + Kato. Shojiro
+ Atsuko Davies + Petula Davies



41.0 x 32.0 cm

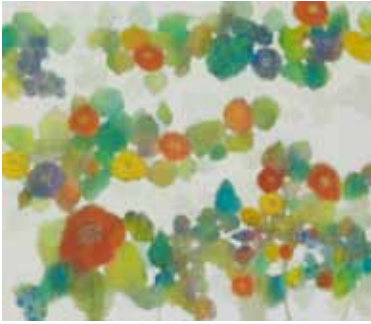


36.0 x 26.0 cm



**AKINORI
ITO**

Mixed-Media



45.4 x 53.0 cm



45.4 x 53.0 cm



**KANA
ITO**
Acrylic on Board



53.0 x 45.5 cm



**HIROTAKA
KASAHARA**
Mixed-Media



53.0 x 45.5 cm



59.4 x 42.0 cm



**KATO,
SHOJIRO**
Pigment &
Gold leaf &
Glue on Paper



59.4 x 42.0 cm



45.5 x 53.0 cm



**YUKO
KAWAGUCHI**
Acrylic on Canvas



45.5 x 53.0 cm



45.5 x 53.0 cm



45.5 x 53.0 cm



53.0 x 46.0 cm



56.0 x 40.0 cm



**KURIBAYASHI,
TSUNEO**

Natural Mineral
Pigment &
Glue on Paper



65.2 x 53.0 cm



65.2 x 53.0 cm



**TERADA,
TOSHIYUKI**

Oil on Canvas



40.0 x 53.0 cm



**REI
HAYASE**

Natural Mineral
Pigment & Glue
on Paper



**NAO,
ATSUHIKO**

Oil on Canvas



45.5 x 53.0 cm



60.6 x 50.0 cm



60.6 x 50.0 cm



65.2 x 53.0 cm



53.0 x 45.5 cm



**TOMOMI
HIKATSU**
Oil on Canvas



40.0 x 40.0 cm



40.0 x 40.0 cm



**NORIKO
YATA**
Oil on Canvas



45.5 x 53.0 cm



53.0 x 45.5 cm

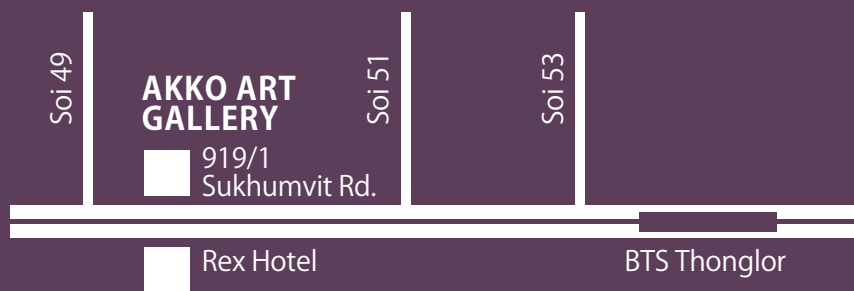


**KAORU
YASUDA**
Mixed-Media



**YONAHA,
TAICHI**
Oil on Paper

Call: 02-259-1436
E-mail: info@akkoart.com
www.akkoart.com
www.facebook.com/akkoartgallery



Presided over by

Dr. Katsumi Kakazu - Director General Japan Foundation Bangkok
& Executive Director Japan Foundation S.E.A.

&

Mr. Hirofumi Sato – President of Toyota Tsusho (Thailand) Co., Ltd.

